



Winter's Choice 2021

2 - 23rd December



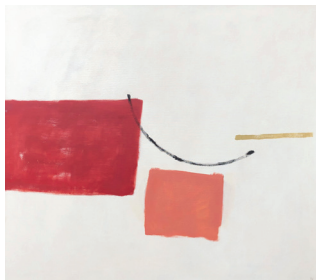
Elaine Turnbull *Snowy Walk*
oil & acrylic on board 9 x 10 ins



Claire Ireland *Vanadium Horse*
hand built stoneware 5 ¼ x 6 ins



Sara Philpott *View from the Driveway*
oil on board 20 x 22 ins



Ingrid Wilkins *Red, Orange & Yellow*
oil on canvas 38 x 42 ins



Jonathan Garratt *Red Striped Rimmed Bowl*
earthenware 12½ ins diam



Andrew McDowall *Grand Canal*
mixed media on board 11¾ x 13½ ins

Carolyn Oliver

has the pleasure of inviting you
to the private view of

Winter's Choice 2021

Thursday 2nd December

2 - 8 pm

Festive drinks

The exhibition will run until Thurs 23rd December
The gallery will re-open on Friday 7th January 2022

Wishing you a very Happy Christmas & New Year

OLIVER CONTEMPORARY

17 Bellevue Road

Wandsworth Common

London SW17 7EG

020 8767 8822

www.oliverart.co.uk

Gallery hours Tues - Sat 11 - 5.30

Charlie Baird *Still Life with Striped Jug* ▶
mixed media on board 8 ¼ x 11 ¼ ins