



Leghorn Bantam  
Middle Farm  
Fittle  
Sussex

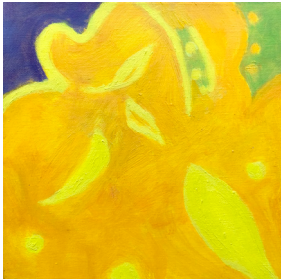
...And Then It's Spring 17th March - 30th April



Charlie Baird *Snowdrops*  
oil on linen 16 x 13 ins



Elaine Turnbull *Spring Gardening*  
oil & acrylic on canvas 10 x 12 ins



Ursula Leach *Leaf & Branch*  
oil on canvas 10 x 10 ins



Sarah Warley-Cummings *Flying High* ed. 6  
carborundum & acrylic 15 3/4 x 15 3/4 ins



Richard Ballinger *Blue Trees, Early Moon*  
oil on canvas 31 1/2 x 31 1/2 ins



David Ralph Simpson *Crocus Lady*  
oil on board 7 x 7 ins



▲ Caroline Grant  
*Chicken*  
earthenware  
6 x 7 ins



▲ Eileen St. Julian-Bown  
*Putney Boat Race* ed. 4  
screenprint  
11 1/2 x 8 ins

Carolyn Oliver

has the pleasure of inviting you  
to the private view of

## ...And Then It's Spring

Thursday 17th March

4 - 8 pm

Drinks

The exhibition will run until 30th April  
(closed for Easter 15th - 19th April)  
*Brand new website up and running*

OLIVER CONTEMPORARY  
17 Bellevue Road  
Wandsworth Common  
London SW17 7EG  
020 8767 8822  
[www.oliverart.co.uk](http://www.oliverart.co.uk)

Gallery hours  
Tues - Sat 11 - 5.30

Clare Sprawson ►  
*Leghorn Bantam, Middle Farm*  
gouache & mixed media  
8 1/2 x 10 1/2 ins